

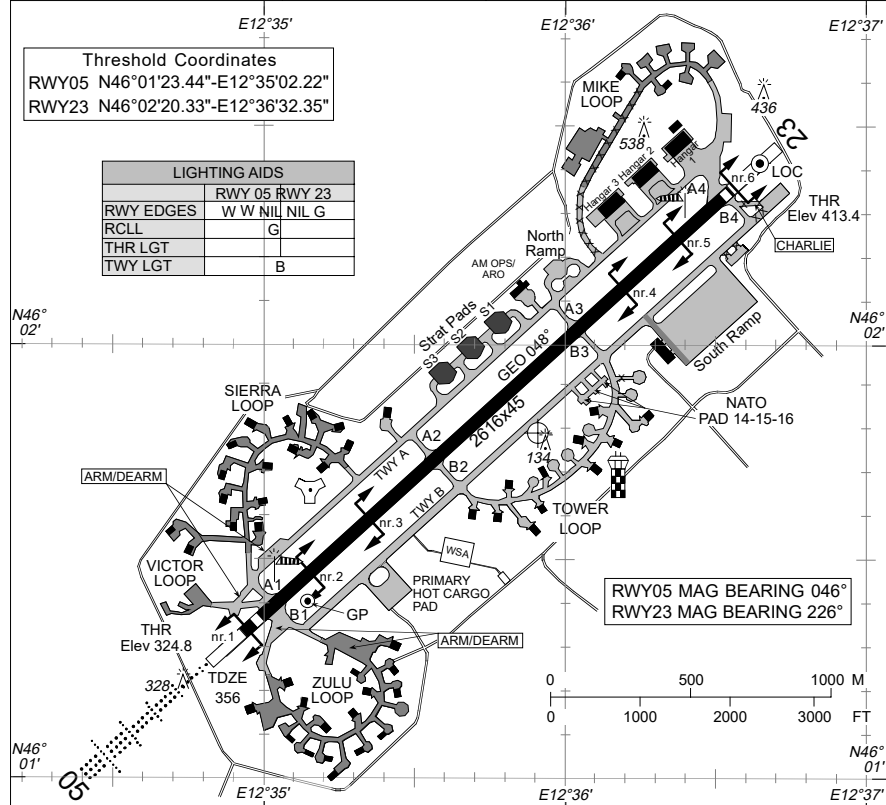
## LANDING CHART

## AVIANO (LIPA)

AD Elev 413	Var 2°E (2010.1)	TA 7000	AVI Ch 111X	N46°01'48.26" - E12°35'55.82"
AVIANO APP/RADAR 120.130		AVIANO TWR 134.100		

**Threshold Coordinates**  
 RWY05 N46°01'23.44"-E12°35'02.22"  
 RWY23 N46°02'20.33"-E12°36'32.35"

LIGHTING AIDS	
RWY EDGES	RWY 05 RWY 23
RCLL	W W NIL NIL G
THR LGT	G
TWY LGT	B



DECLARED DISTANCES						TRAFFIC CIRCUITS	
RWY	TORA m	TODA		ASDALDA m		RWY 05 LEFT RWY 23	
	ft	m	ft	f t	m	JET BRANCH	
05	2616 8583	28609	3 8 3	2860	9383	2616 8	5 8 3
23	2616 8583 2716	8911		2870	9416 2616	8583	
ARRESTING GEAR			REMARKS				
BLISS BAK 12B RWY 05/23 E-5 RWY 05/23 When RWY 05 is in use, cables nr.1,4,5,6 are raised up and RWY 23 cables are AVBL 15 min PN. When RWY 23 is in use, cables nr.1,2,3,6 are raised up and RWY 05 cables are AVBL 15 min PN.			ALS RWY 05 PAPI RWY 05/23 2° 30' Areas not visible from TWR TAX of ACFT type C17 and largest than C17 not allowed on West side portion of South RAMP				

## LANDING CHART

## AVIANO (LIPA)